



RUBB INC. SOURCEWELL PRICELIST

Rubb, Inc.

1 Rubb Lane, Sanford, ME USA 04073

Tel: 1-207-324-2877 Fax: 1-207-324-2347

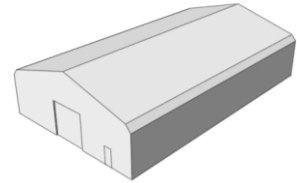
Web: <http://www.rubbusa.com> E-mail: info@rubbusa.com

12-Jul-2023
#091319 eff. 7/12/2023

All Sourcewell members get 40% discount from published price (.6x)

BVE RANGE - SINGLE PITCH ROOFS

Span (ft)		30	40	50	60	70
Leg (ft)		16.4	16.4	16.4	16.4	16.4
Base	33' 4"	\$111,996	\$128,826	\$151,980	\$169,116	\$175,236
Length (ft)	50' 0"	\$136,500	\$156,600	\$183,900	\$204,300	\$215,700
	66' 8"	\$161,000	\$184,300	\$215,800	\$239,500	\$256,200
	83' 4"	\$185,400	\$212,100	\$247,800	\$274,700	\$296,700
	100' 0"	\$209,900	\$239,800	\$279,700	\$309,900	\$337,200
	116' 8"	\$234,400	\$267,500	\$311,600	\$345,100	\$377,700
	133' 4"	\$258,900	\$295,300	\$343,500	\$380,300	\$418,200
	150' 0"	\$283,400	\$323,000	\$375,500	\$415,400	\$458,700
	200' 0"	\$356,800	\$406,300	\$471,200	\$521,000	\$580,200
16' 8" Module		\$24,480	\$27,744	\$31,926	\$35,190	\$40,494
\$/sf for 200'		\$59.47	\$50.78	\$47.12	\$43.42	\$41.44
\$/sf Gable		\$14.28	\$13.77	\$13.45	\$13.45	\$12.90



Note: Buildings can be manufactured to any length.



For open-ended buildings, deduct the \$/sf gable with the multipliers for leg and wind. Remember to adjust gable area for increased leg height.

Surface Area (square feet)

Base	33' 4"	3,400	4,220	5,070	5,940	6,960
16' 8" Module		1,100	1,270	1,450	1,620	1,810
Gable Endwall		600	840	1,090	1,350	1,670

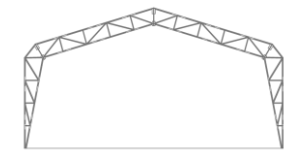
Weight Calculations (pounds)

Base	33' 4"	12,240	14,325	15,980	17,800	21,670
16' 8" Module		3,150	3,410	3,750	4,100	5,060

Weights are approximate for 16.4' leg height. Consult factory for other sizes.

Leg Height Multipliers

Span (ft)		30	40	50	60	70
Leg Height (ft)	9.8'	0.75	0.81	0.82	0.83	0.80
	13.1'	0.85	0.90	0.90	0.92	0.90
	16.4'	1.00	1.00	1.00	1.00	1.00
	19.7'	1.09	1.05	1.09	1.05	1.09
	23.0'	1.18	1.17	1.18	1.13	1.20
	26.2'	1.27	1.28	1.28	1.22	1.28



Snow Load Multipliers

Span (ft)		30	40	50	60	70
Ground Snow	20 psf	1.00	1.00	1.00	1.00	1.00
	30 psf	1.02	1.03	1.03	1.01	1.05
	40 psf	1.03	1.04	1.05	1.02	1.09
	50 psf	1.04	1.05	1.07	1.05	1.13
	60 psf	1.05	1.08	1.10	1.06	1.17
	70 psf	1.06	1.09	1.12	1.16	1.21

Standard design loads:
20 psf ground snow
110 mph 3-second gust wind

Higher load factors available. Consult factory for details.

Wind Load Multipliers

Leg Height (ft)		<=16.4'	19.7'	23.0'	26.2'
ASCE 7-10	110 mph	1.00	1.00	1.00	1.00
	120 mph	1.01	1.02	1.04	1.05
	130 mph	1.02	1.05	1.06	1.10



All prices are in US Dollars, FOB Sanford, Maine USA. Prices exclude any sales or other taxes.



RUBB INC. SOURCEWELL PRICELIST

Rubb, Inc.

1 Rubb Lane, Sanford, ME USA 04073

Tel: 1-207-324-2877 Fax: 1-207-324-2347

Web: <http://www.rubbusa.com> E-mail: info@rubbusa.com

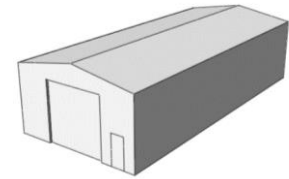
12-Jul-2023

#091319 eff. 7/12/2023

All Sourcewell members get 40% discount from published price (.6x)

BVR RANGE - SINGLE PITCH ROOFS

Span (ft)		20	30	40	50	60
Leg (ft)		16	16	16	16	16
Base	33' 4"	\$69,360	\$87,720	\$108,630	\$130,764	\$148,104
Length (ft)	50' 0"	\$88,500	\$110,700	\$137,400	\$164,900	\$185,800
	66' 8"	\$107,700	\$133,600	\$166,200	\$199,100	\$223,600
	83' 4"	\$126,900	\$156,600	\$194,900	\$233,300	\$261,300
	100' 0"	\$146,100	\$179,500	\$223,700	\$267,400	\$299,100
	116' 8"	\$165,200	\$202,500	\$252,500	\$301,600	\$336,800
	133' 4"	\$184,400	\$225,400	\$281,200	\$335,800	\$374,500
	150' 0"	\$203,600	\$248,400	\$310,000	\$370,000	\$412,300
	200' 0"	\$261,100	\$317,200	\$396,300	\$472,500	\$525,500
16' 8" Module		\$19,176	\$22,950	\$28,764	\$34,170	\$37,740
\$/sf for 200'		\$65.64	\$53.16	\$49.80	\$47.51	\$44.04
\$/sf Gable		\$21.06	\$19.75	\$17.41	\$16.32	\$15.57



Note: Buildings can be manufactured to any length.



For open-ended buildings, deduct the \$/sf gable with the multipliers for leg and wind. Remember to adjust gable area for increased leg height.

Weights are approximate for 16' leg height. Consult factory for other sizes.

Surface Area (square feet)

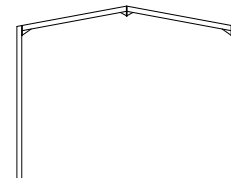
Base	33' 4"	2,440	3,160	3,960	4,800	5,600
16' 8" Module		870	1,030	1,180	1,350	1,500
Gable Endwall		350	560	800	1,050	1,300

Weight Calculations (pounds)

Base	33' 4"	6,900	9,100	11,500	15,600	18,500
16' 8" Module		2,550	2,950	3,700	4,600	5,650

Leg Height Multipliers

Span (ft)		20	30	40	50	60
Leg Height (ft)	10'	0.84	0.84	0.82	0.86	0.85
	12'	0.90	0.90	0.87	0.88	0.88
	16'	1.00	1.00	1.00	1.00	1.00
	20'	1.16	1.20	1.25	1.27	1.38
	24'	1.34	1.37	1.45	n/a	n/a
	28'	1.51	1.54	n/a	n/a	n/a



Snow Load Multipliers

Span (ft)		20	30	40	50	60
Ground Snow	20 psf	1.00	1.00	1.00	1.00	1.00
	30 psf	1.01	1.04	1.01	1.05	1.05
	40 psf	1.02	1.04	1.07	1.11	1.12
	50 psf	1.03	1.05	1.12	n/a	n/a
	60 psf	1.05	n/a	n/a	n/a	n/a
	70 psf	1.06	n/a	n/a	n/a	n/a

Standard design loads:

20 psf ground snow
110 mph 3-second gust wind

Higher load factors available. Consult factory for details.

Wind Load Multipliers

Leg Height (ft)		<=16'	20'	24'	28'
ASCE 7-10	110 mph	1.00	1.00	1.00	1.00
	120 mph	1.07	1.17	1.33	1.40
	130 mph	1.12	1.20	1.35	n/a



All prices are in US Dollars, FOB Sanford, Maine USA. Prices exclude any sales or other taxes.